



[Home](#) » [Events](#) » [Exhibitions](#) » [Visual Arts](#)

## Deborah Colton Gallery presents Dorothy Hood and Daniel Kayne; "Earth & Space" opening day



0



0

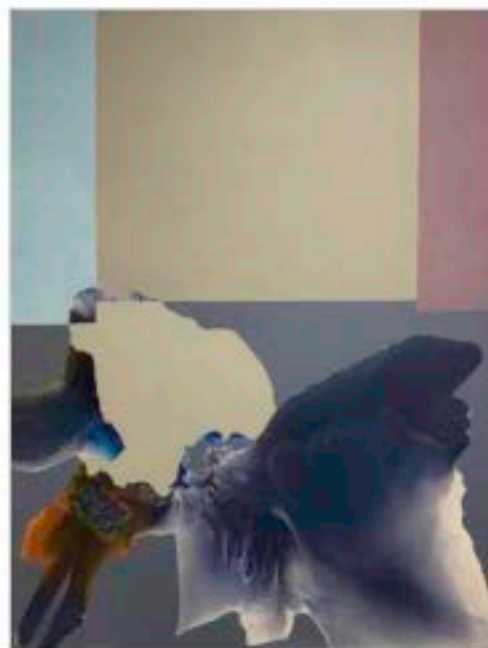


*Many events have been canceled or postponed due to coronavirus concerns. Please check with the organization before going to any event.*

Deborah Colton Gallery will present Dorothy Hood and Daniel Kayne: "Earth & Space," an exhibition featuring works from the two Texas natives.

As one of the early Texas abstract artists, Dorothy Hood was born in 1918 and was raised in Houston. Hood was known nationwide for creating epic paintings that evoked the limitless skies and psychic voids of space, years ahead of NASA images. Capturing the earth's natural beauty through her worldwide travels, with vast horizons looking far into the universe, was always a signature of Dorothy Hood

magnificent artworks. Over the next four decades, before her passing in 2000, Dorothy Hood became a renowned Texas painter whose works were collected across the United States, including over 30 major museums.



*Photo courtesy of Deborah Colton Gallery*

Like Hood, Daniel Kayne's vision expanded far beyond himself and his immediate surroundings. Both artists were visionary thinkers who had the talent to see our lives from a universal perspective, looking at Space from the Earth ... and looking at the Earth from Space. This higher level thinking, looking at the Earth within the greater Universe... the world as one, is a view that can evoke much thought towards a positive the future...

The exhibition, on view through September 12, can be seen online through the gallery's Viewing Room. Installation and artwork images can be seen through the gallery's Virtual Slide Show and website. All works are available for acquisition.

## EVENT DETAILS

### WHEN

Jul 25, 2020, 10:30 am

### WHERE

Deborah Colton Gallery

2445 North Blvd.

Houston, TX 77098

[Get Directions >](#)

### [WEBSITE >](#)

### PHONE

[713-869-5151](#)

### TICKET INFO

Admission is free.