

Art Notes

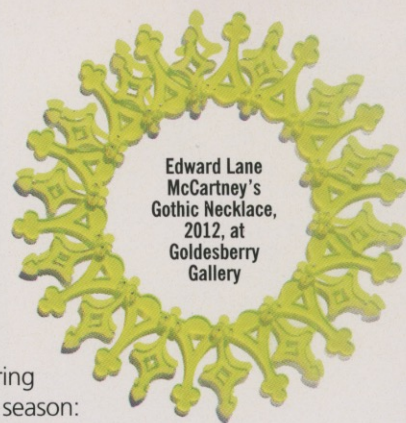
Good Gifting: As we wrap the year, we're giving thanks for **Houston Arts Alliance**, whose innovative Web site **power2gift.org** makes donating to your fave arts nonprofit a breeze ... Speaking of HAA, we'll be following more stories in 2013, including the continuing impact of **The Creative Economy Study**, commissioned by **HAA** and the **University of Houston** in tandem with the **Greater Houston Partnership**. The numbers reveal there are more jobs (146,000 plus) in our creative economy than at the Medical Center, while our creative sector fuels a staggering \$21.93 billion annually in sales ... Jewelers shine in dual shows this season:

Raphaele's dramatic bijoux creations, many from found objets, at **Darke Gallery** (through December 22). Then visit **Goldesberry Gallery's** final show: an over-the-top jewelry showcase including works by **Edward Lane McCartney** (through December 24) ... **Return of the Prodigal Son:** **Angelbert Metoyer** touches down at **Deborah Colton Gallery** to unveil a new series of drawings, continuing his cosmic babies and interest in time travel. Alongside Metoyer, it's an enticing array, including emerging video talent **Brent Bruni Comiskey**, PC Acquire headliner **Deborah Treviño Porter**, as well as **Soody Sharifi's** updates on Persian miniatures (through January 19) ... **Super Eight/Dirty Dozen:** Our hometown talents are celebrated here and on the road. At the **Station Museum of Contemporary Art**, the "HX8" [Houston Time Eight] presents our best and brightest including respected senior masters **Forrest Prince**, **Lynn Randolph**, and **Floyd Newsum** as well as Whitney Biennial-shown **Robert Pruitt** (through February 17) ... Hit the highway and head to the rebranded **Blue Star** in San Antonio for "The Dirty Dozen," which pairs Houston and San Antonio artists side-by-side; representing our burg are **Susan Plum**, **Liza Littlefield**, **Nancy Douthey** (with a new performance), **Jonathan Leach** and **Ann Wood**. Yours truly curates (December 6 – February 16) ... **Alternative Wows:** Some of the strongest exhibitions are mounted by **Lawndale Art Center**, **Art League Houston** and at the new midtown digs of **DiverseWorks** (more coming in our January issue). Check out, respectively, a show all about boredom at Lawndale (through January 12), Art League's really major "Stacks" curated by **Robert Pruitt** that examines the black experience (through January 4), and DW's talk of the town, a wild installation by **Franklin Evans** (through January 5) ... **Moving On Up:** PG Contemporary moves to 4411 Montrose, come January. Meanwhile, at PG's Milam digs, Japanese action painter and performer **Ushio Shinohara** headlines concurrently with his show at MoMA (through December 5, reopening at 4411 January 12) ... See late Houston color-field great **Dorothy Hood** at **Thom Andriola/New Gallery** (through December) ... We also love the sublime and simple splendor of **Joe Havel's** cast book stacks and



Dorothy Hood's *Copper Canyon*, circa 1980s, at Thom Andriola/New Gallery

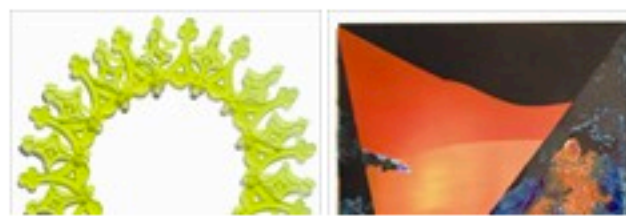
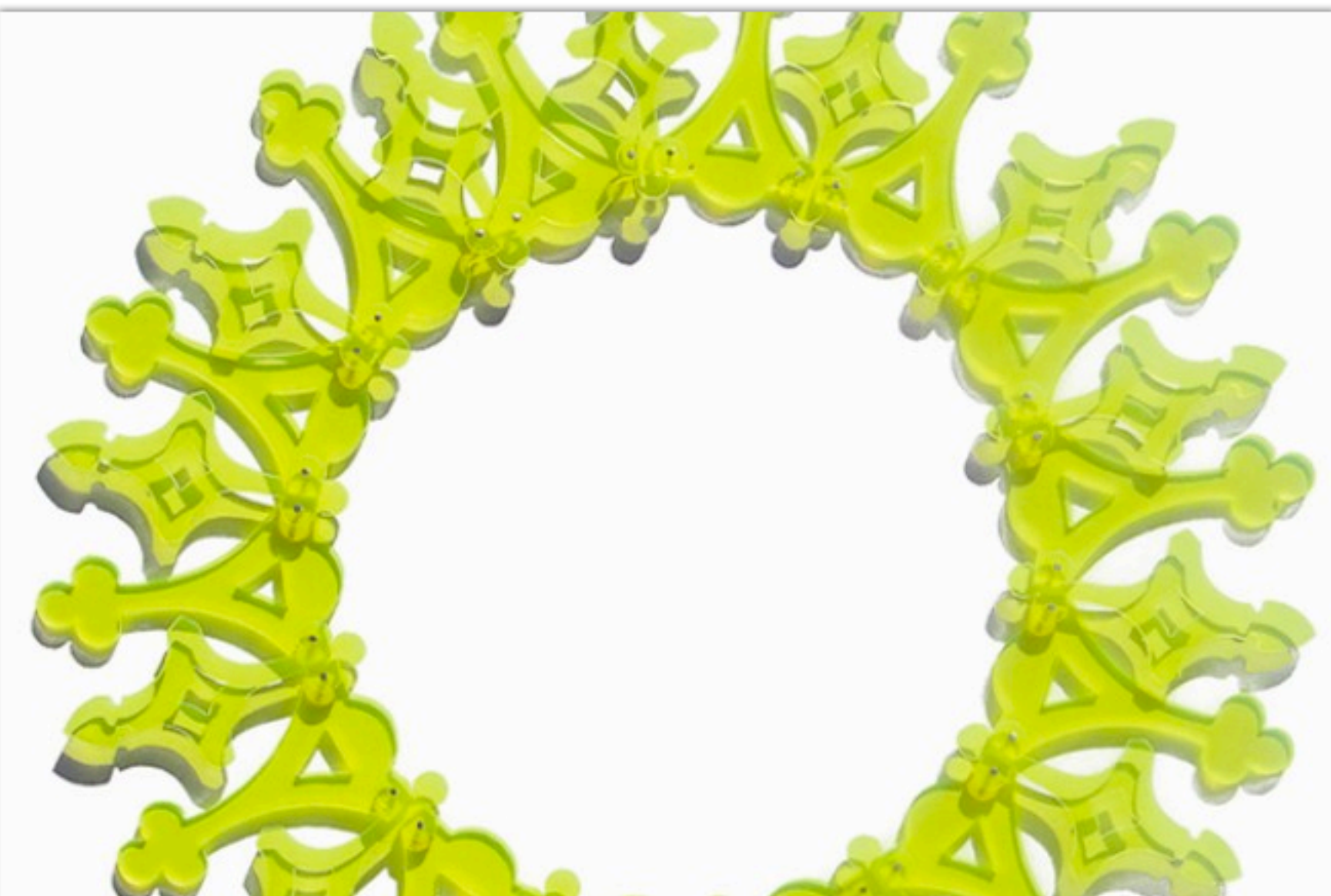
minimalist shirt-label wall pieces at **Hiram Butler Gallery** (through January 26) ... "The Realist Impulse" at **Rudolph Blume/ArtScan** presents a disquieting take on realism (through January 12); and **Barbara Davis'** round up includes **Jay Shinn** who trips the light fantastic and **Paul Fleming** of the fabulous futuristic resin (through January 5) ... Noteworthy doubleheader: **Laura Rathe's** dual solos for **Erik Gonzales** and **Tamara Robertson** (December 1 – January 5). See you in 2013. *Catherine D. Ansporn*



Edward Lane McCartney's Gothic Necklace, 2012, at Goldesberry Gallery

Art Notes

Houston Art News for December



[Launch Slideshow](#) 2

Catherine D. Ansporn

Posted: December 12, 2012

Good Gifting: As we wrap the year, we're giving thanks for **Houston Arts Alliance**, whose innovative Web site [power2gift.org](#) makes donating to your fave arts nonprofit a breeze ... Speaking of HAA, we'll be following more stories in 2013, including the continuing impact of **The Creative Economy Study**, commissioned by HAA and the **University of Houston** in tandem with the **Greater Houston Partnership**. The numbers reveal there are more jobs (146,000 plus) in our creative economy than at the Medical Center, while our creative sector fuels a staggering \$21.93 billion annually in sales ... Jewelers shine in dual shows this season: **Raphaele's** dramatic bijoux creations, many from found objets, at **Darke Gallery** (through December 22). Then visit **Goldesberry Gallery's** final show: an over-the-top jewelry showcase including works by **Edward Lane McCartney** (through December 24).

Return of the Prodigal Son: **Angelbert Metoyer** touches down at **Deborah Colton Gallery** to unveil a new series of drawings, continuing his cosmic babies and interest in time travel. Alongside Metoyer, it's an enticing array, including emerging video talent **Brent Bruni Comiskey**, PC Acquire headliner **Deborah Treviño Porter**, as well as **Sody Sharifi's** updates on Persian miniatures (through January 19).

Super Eight/Dirty Dozen: Our hometown talents are celebrated here and on the road. At the **Station Museum of Contemporary Art**, the "HX8" [Houston Time Eight] presents our best and brightest including respected senior masters **Forrest Prince**, **Lynn Randolph** and **Floyd Newsum**, as well as Whitney Biennial-shown **Robert Pruitt** (through February 17) ... Hit the highway and head to the rebranded **Blue Star** in San Antonio for "The Dirty Dozen," which pairs Houston and San Antonio artists side-by-side; representing our burg are **Susan Plum**, **Liza Littlefield**, **Nancy Douthey** (with a new performance), **Jonathan Leach** and **Ann Wood**. Yours truly curates (December 6 – February 16).

Alternative Wows: Some of the strongest exhibitions are mounted by **Lawndale Art Center**, **Art League Houston** and at the new midtown digs of **DiverseWorks** (more coming in our January issue). Check out, respectively, a show all about boredom at Lawndale (through January 12), Art League's really major "Stacks" curated by **Robert Pruitt** that examines the black experience (through January 4), and DW's talk of the town, a wild installation by **Franklin Evans** (through January 5).

Moving On Up: **PG Contemporary** moves to 4411 Montrose, come January. Meanwhile, at PG's Milam digs, Japanese action painter and performer **Ushio Shinohara** headlines concurrently with his show at MoMA (through December 5, reopening at 4411 January 12) ... See late Houston color-field great **Dorothy Hood** at **Thom Andriola/New Gallery** (through December) ... We also love the sublime and simple splendor of **Joe Havel's** cast book stacks and minimalist shirt-label wall pieces at **Hiram Butler Gallery** (through January 26) ... "The Realist Impulse" at **Rudolph Blume/ArtScan** presents a disquieting take on realism (through January 12); and **Barbara Davis'** round up includes **Jay Shinn**, who trips the light fantastic, and **Paul Fleming** of the fabulous futuristic resin (through January 5).

Noteworthy Doubleheader: **Laura Rathe's** dual solos for **Erik Gonzales** and **Tamara Robertson** (December 1 – January 5). See you in 2013.

[T](#) [T](#) [T](#) [✉](#) [🖨](#) [+1](#) [0](#) [Like](#) [0](#) [Tweet](#) [0](#) [Submit](#) [Share](#)

CURRENT ISSUE

JANUARY 2013

Big plans at Dallas' brightest joule

Bryan Adams exposes new exhibit on view all this month

Inside the head of Houston's new favorite jewelry charmer

Talking interiors with designer Jane Waggoner

Get lost in Ashley Putman's country nest

COLLECTOR'S CONVERSATION brought to you by DALLAS ART FAIR

OUR STAFF SAYS

Holly Moore
Editor-in-Chief

- A Very PaperCity Giveaway
- Ferociously Fabulous Furs
- Thom Filicia in Person

[<](#) [●](#) [●](#) [●](#) [●](#) [●](#) [●](#) [●](#) [●](#) [●](#) [●](#) [>](#)

PAPERCITY POLL

How would you spend your dream New Year's Eve?

- ☐ IN A PENTHOUSE OVERLOOKING PARIS
- ☐ IN ST. BARTHS ON THE BEACH
- ☐ IN ASPEN AT YOUR MOUNTAIN TOP RETREAT

[Submit](#)

LOOK AT YOU

PEOPLE

Type name here... [GO](#)

ABCDEFGHIJKLMNOPQRSTUVWXYZ

A New Man

A Toast to Good Health

A. David Schwarz

A. Thomas Garcia III

A.E. Canali

A.J. Applewhite

A.J. Jacobs

A.R. Rahman

Aaron Ashmore

Aaron Bidne

PARTIES

A New Man

Click on any photo to launch Photo Gallery

ADVERTISERS' NEWS

[< Last](#) [Next >](#) [View All](#)

Rice Epicurean

Honeybaked Hams are a delicious holiday tradition! Pick one up for your holiday feast anytime this holiday season. Available at all of our delis!

Charming Charlie

Shop Charming Charlie's jewelry and accessories mecca at their newest location at Houston's CityCentre. The store offers a selection for any occasion and customer taste.

Santa Fe Luxury Properties

Beat the heat with a Santa Fe 2nd home! Call Marilyn Foss at Santa Fe Properties, 505-231-2500

NET-A-PORTER.COM

THE wedding SHOP

shop now

Free Shipping

Shop Now

NET-A-PORTER.COM

shop the NEW SEASON