



Art Notes

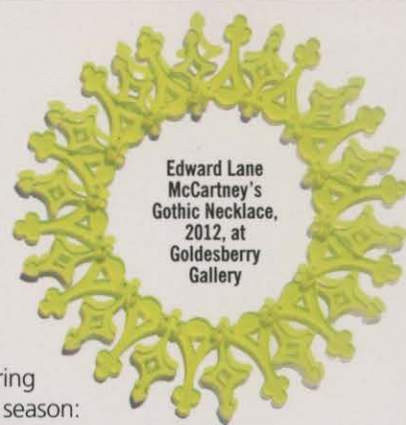
Good Gifting: As we wrap the year, we're giving thanks for **Houston Arts Alliance**, whose innovative Web site **power2gift.org** makes donating to your fave arts nonprofit a breeze ... Speaking of HAA, we'll be following more stories in 2013, including the continuing impact of **The Creative Economy Study**, commissioned by **HAA** and the **University of Houston** in tandem with the **Greater Houston Partnership**. The numbers reveal there are more jobs (146,000 plus) in our creative economy than at the Medical Center, while our creative sector fuels a staggering \$21.93 billion annually in sales ... Jewelers shine in dual shows this season:

Raphaele's dramatic bijoux creations, many from found objets, at **Darke Gallery** (through December 22). Then visit **Goldesberry Gallery's** final show: an over-the-top jewelry showcase including works by **Edward Lane McCartney** (through December 24) ... **Return of the Prodigal Son:**

Angelbert Metoyer touches down at **Deborah Colton Gallery** to unveil a new series of drawings, continuing his cosmic babies and interest in time travel. Alongside Metoyer, it's an enticing array, including emerging video talent **Brent Bruni Comiskey**, PC Acquire headliner **Deborah Treviño Porter**, as well as **Soody Sharifi's** updates on Persian miniatures (through January 19) ... **Super Eight/Dirty Dozen:**

Our hometown talents are celebrated here and on the road. At the **Station Museum of Contemporary Art**, the "HX8" [Houston Time Eight] presents our best and brightest including respected senior masters **Forrest Prince**, **Lynn Randolph**, and **Floyd Newsum** as well as Whitney Biennial-shown **Robert Pruitt** (through February 17) ... Hit the highway and head to the rebranded **Blue Star** in San Antonio for "The Dirty Dozen," which pairs Houston and San Antonio artists side-by-side; representing our burg are **Susan Plum**, **Liza Littlefield**, **Nancy Douthey** (with a new performance), **Jonathan Leach** and **Ann Wood**. Yours truly curates (December 6

– February 16) ... **Alternative Wows:** Some of the strongest exhibitions are mounted by **Lawndale Art Center**, **Art League Houston** and at the new midtown digs of **DiverseWorks** (more coming in our January issue). Check out, respectively, a show all about boredom at Lawndale (through January 12), Art League's really major "Stacks" curated by **Robert Pruitt** that examines the black experience (through January 4), and DW's talk of the town, a wild installation by **Franklin Evans** (through January 5) ... **Moving On Up:** PG Contemporary moves to 4411 Montrose, come January. Meanwhile, at PG's Milam digs, Japanese action painter and performer **Ushio Shinohara** headlines concurrently with his show at MoMA (through December 5, reopening at 4411 January 12) ... See late Houston color-field great **Dorothy Hood** at **Thom Andriola/New Gallery** (through December) ... We also love the sublime and simple splendor of **Joe Havel's** cast book stacks and minimalist shirt-label wall pieces at **Hiram Butler Gallery** (through January 26) ... "The Realist Impulse" at **Rudolph Blume/ArtScan** presents a disquieting take on realism (through January 12); and **Barbara Davis'** round up includes **Jay Shinn** who trips the light fantastic and **Paul Fleming** of the fabulous futuristic resin (through January 5) ... Noteworthy doubleheader: **Laura Rathe's** dual solos for **Erik Gonzales** and **Tamara Robertson** (December 1 – January 5). See you in 2013. *Catherine D. Ansporn*



Edward Lane
McCartney's
Gothic Necklace,
2012, at
Goldesberry
Gallery



Dorothy Hood's *Copper Canyon*, circa 1980s, at Thom Andriola/New Gallery

